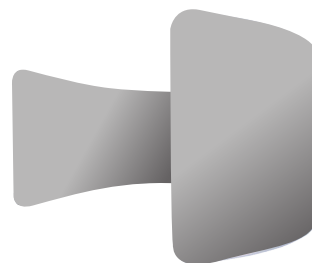
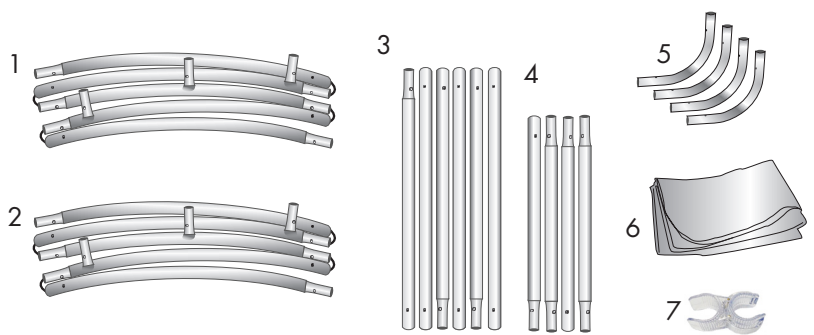


Product Parts

- 1 - 5pc Top Curved Pole
- 2 - 5pc Bottom Curved Pole
- 3 - Vertical Center Poles (x6)
- 4 - Vertical End Poles (x4)
- 5 - Curved Corners (x4)
- 6 - Graphic
- 7 - Plastic Hinge Connector



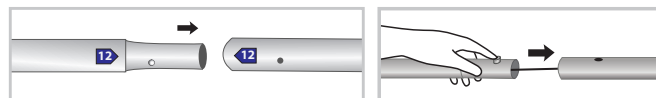
Display Set-Up

Step 1

Begin by removing all parts from the carry case and place on a clean, flat surface. Ensure you have all the components listed above.

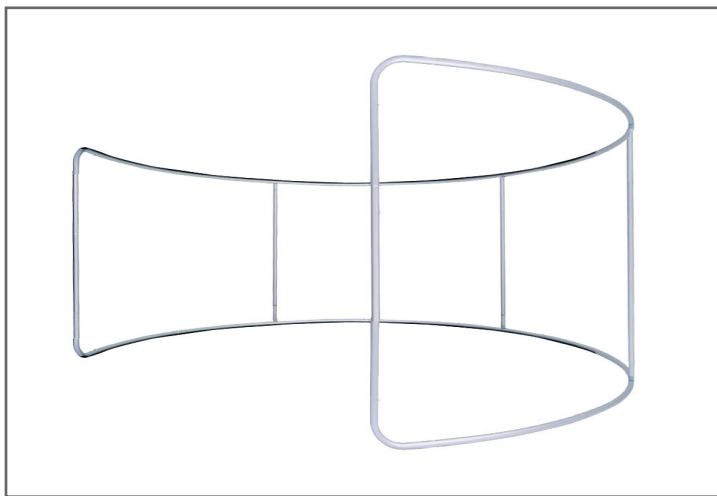
Step 2

Assemble all the poles by connecting the corresponding numbers together while pressing the snap button as shown.



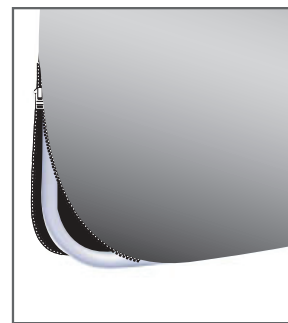
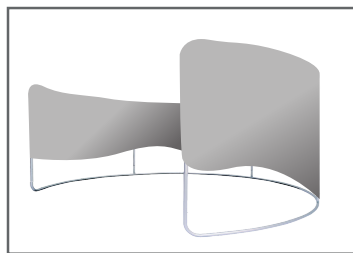
Step 3

Continue to connect the poles illustrated in the image below.



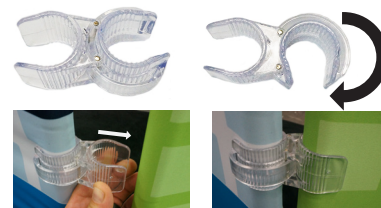
Step 4

With the zipper at the bottom, drape the Graphic (6) over the hardware and zip closed.



Plastic Hinge Connector

Used to connect all Eurofit Displays with 1.25" Diameter Poles.



Storage & Care

Place all product parts into Carry Case and store in a cool dry location. Recommended for indoor use only. Machine wash on gentle cycle using mild detergent. Tumble Dry No Heat. Do NOT dry clean, Do NOT Iron.